

RESTROOM AT LAKE PARK

Town of Carolina Beach

400 Lake Park Blvd. S
Carolina Beach, NC 28428



Consultants

Landscape Architect

**benesch**

Alfred Benesch & Company
2359 Perimeter Pointe Parkway, Suite 350
Charlotte, NC 28208
www.benesch.com
P 704.521.9880
Corp. NC License: F-1320

Civil Engineer

**benesch**

Alfred Benesch & Company
2359 Perimeter Pointe Parkway, Suite 350
Charlotte, NC 28208
www.benesch.com
P 704.521.9880
Corp. NC License: F-1320

Schedule of Drawings

Civil / Landscape Architectural

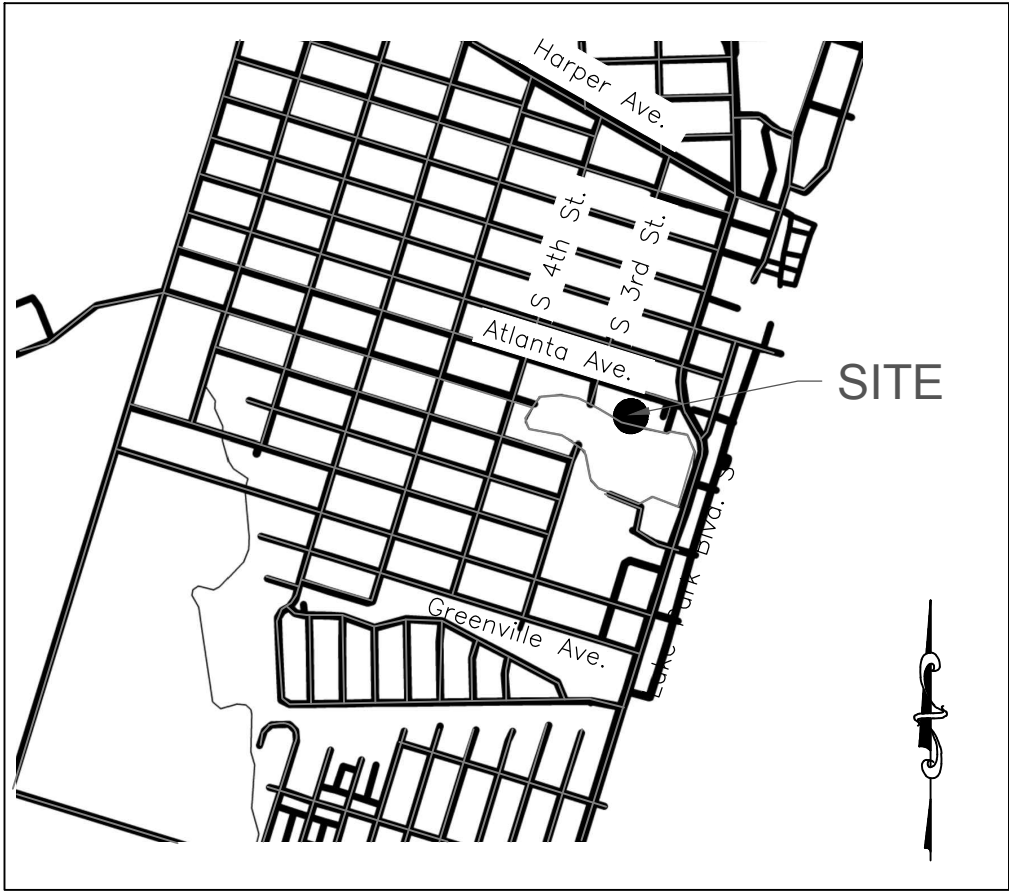
Sheet Number	Sheet Title
C000	COVER
C100	EXISTING & DEMO PLAN
C200	SITE PLAN
C300	EROSION CONTROL, GRADING & UTILITIES PLAN
C500	SITE CONSTRUCTION DETAILS
C501	SITE CONSTRUCTION DETAILS
C600	LANDSCAPE PLAN

Restroom Building

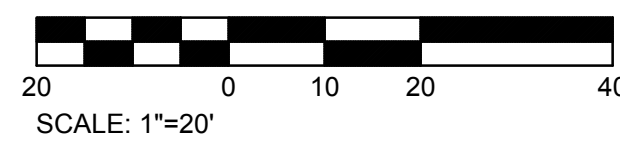
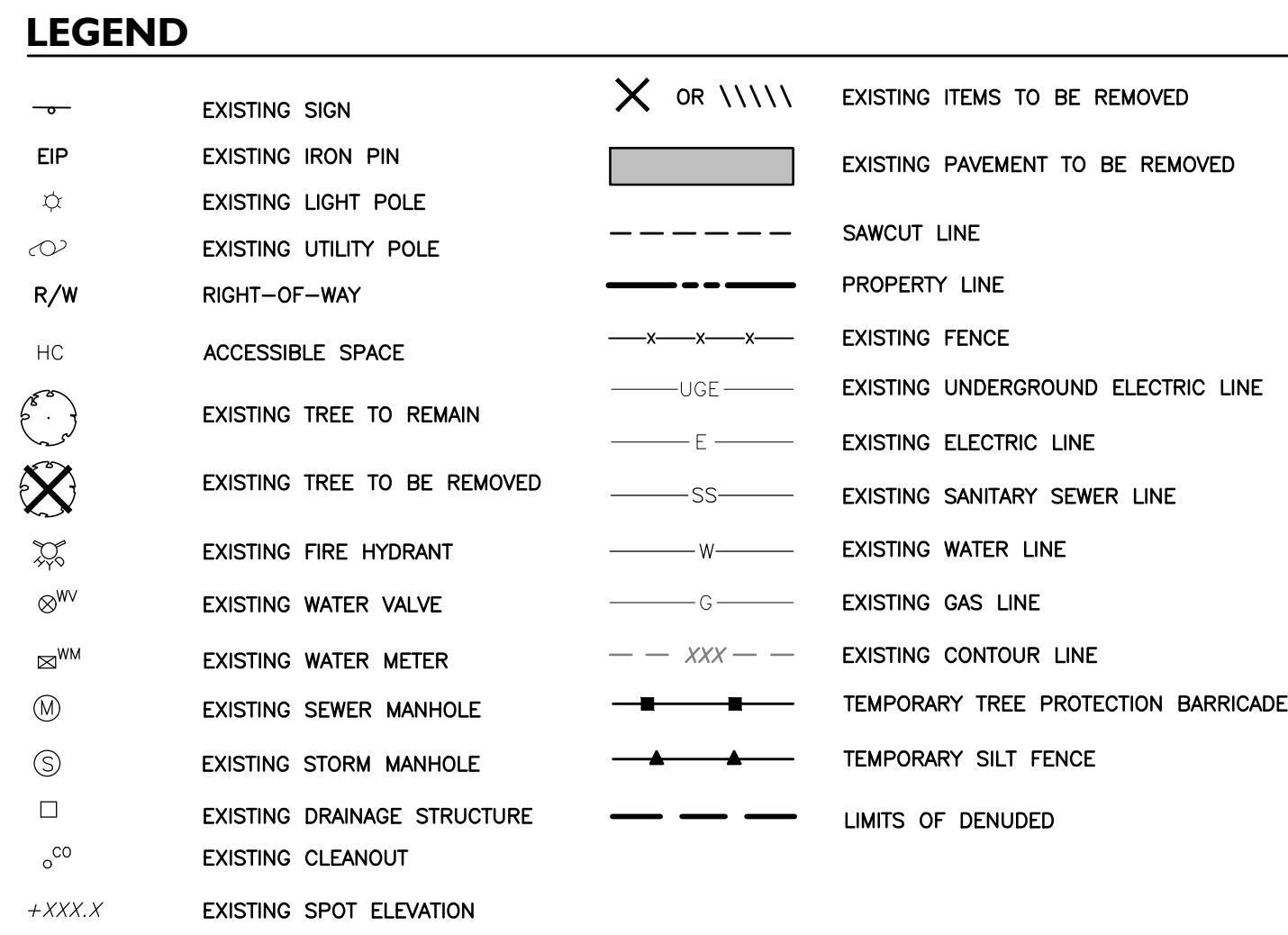
Sheet Number	Sheet Title
C700	RESTROOM DETAILS

Site Electrical

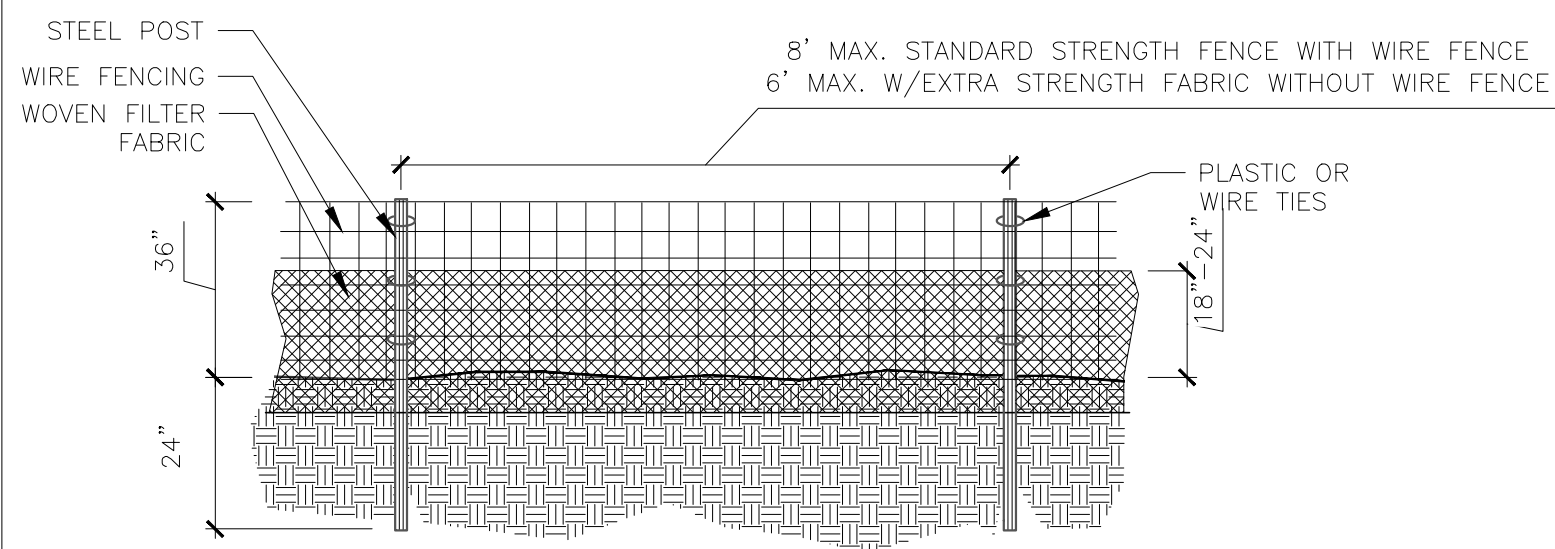
Sheet Number	Sheet Title
E-001	ELECTRICAL - COVER SHEET
E-101	ELECTRICAL - SITE PLAN
E-102	ELECTRICAL - SCHEDULES



Vicinity Map





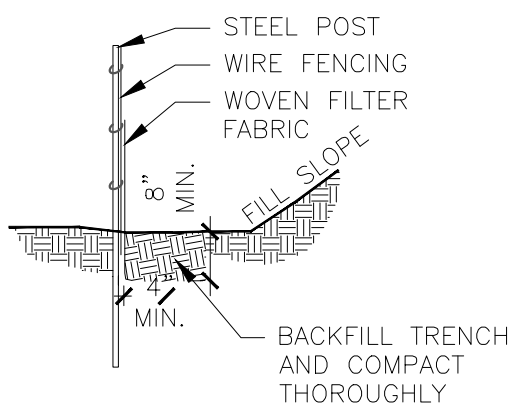


GENERAL NOTES:

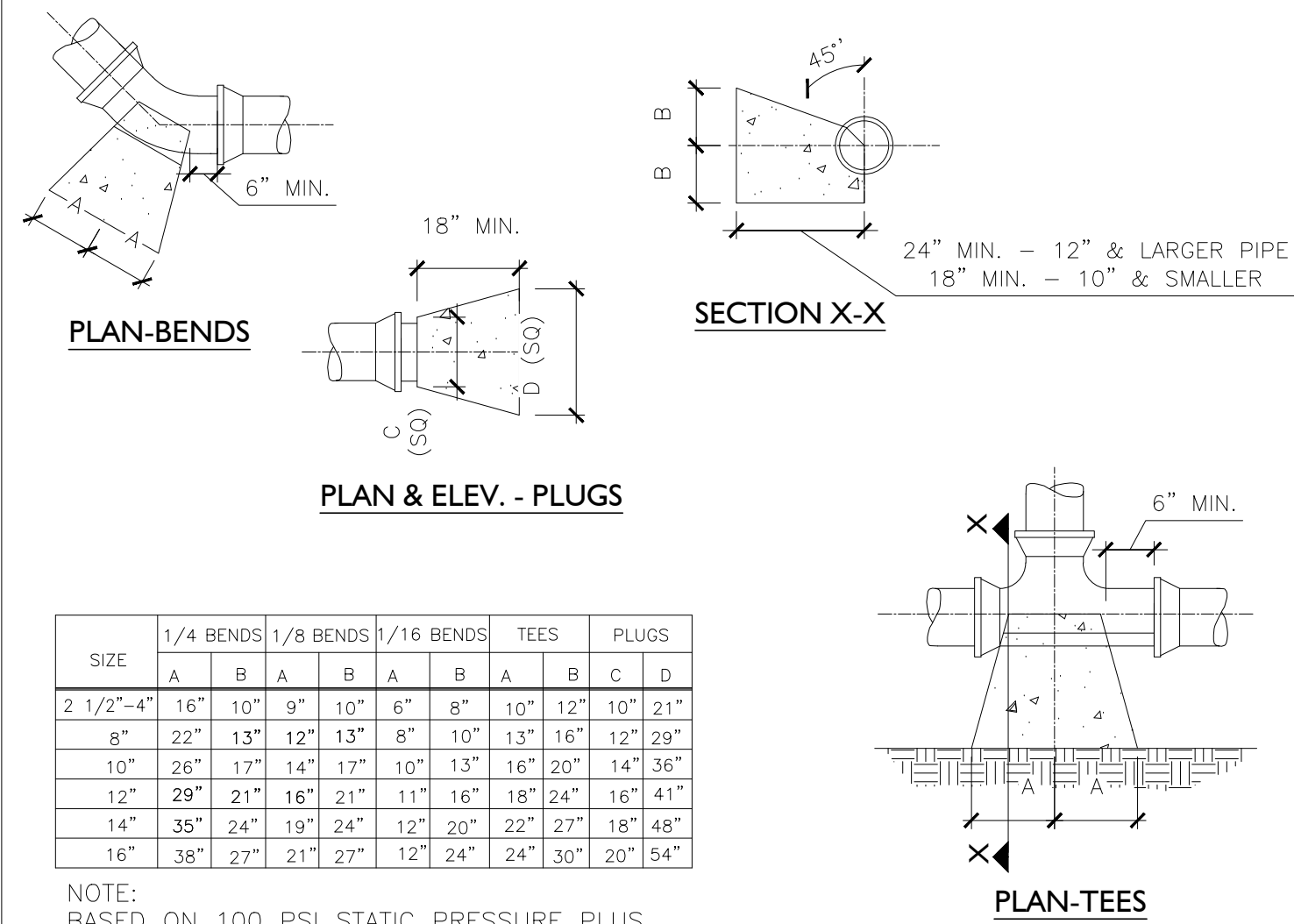
1. FILTER FABRIC FENCE SHALL BE A MINIMUM OF 32" IN WIDTH AND SHALL HAVE A MINIMUM OF 6 LINE WIRES WITH 12" STAY SPACING.
2. WOVEN FILTER FABRIC BE USED WHERE SILT FENCE IS TO REMAIN FOR A PERIOD OF MORE THAN 30 DAYS.
3. STEEL POSTS SHALL BE 5'-0" IN HEIGHT AND BE OF THE SELF-FASTENER ANGLE STEEL TYPE.
4. WIRE FENCING SHALL BE AT LEAST #10 GAGE WITH A MINIMUM OF 6 LINE WIRES WITH 12" STAY SPACING.
5. TURN SILT FENCE UP SLOPE AT ENDS.
6. WIRE MESH SHALL BE MIN. 14 GAGE WITH MAXIMUM 6" OPENINGS.
7. ORANGE SAFETY FENCE IS REQUIRED AT BACK OF SILT FENCE (WITHIN 5 FT.) WHEN GRADING IS ADJACENT TO SWIM BUFFERS OR WETLANDS (REFER TO SWIM BUFFER GUIDELINES).

MAINTENANCE NOTES:

1. FILTER BARRIERS SHALL BE INSPECTED BY THE FINANCIALLY RESPONSIBLE PARTY OR HIS AGENT IMMEDIATELY AFTER EACH RAINFALL AND AT LEAST DAILY DURING PROLONGED RAINFALL. ANY REPAIRS NEEDED SHALL BE MADE IMMEDIATELY.
2. SHOULD THE FABRIC DECOMPOSE OR BECOME INEFFECTIVE PRIOR TO THE END OF THE EXPECTED USABLE LIFE AND THE BARRIER STILL IS NECESSARY, THE FABRIC SHALL BE REPLACED PROMPTLY.
3. SEDIMENT DEPOSITS SHOULD BE REMOVED WHEN DEPOSITS REACH APPROX. HALF THE HEIGHT OF THE BARRIER. ANY SEDIMENT DEPOSITS REMAINING IN PLACE AFTER THE SILT FENCE IS REMOVED SHALL BE DRESSED TO CONFORM TO THE EXISTING GRADE, PREPARED AND SEEDED.



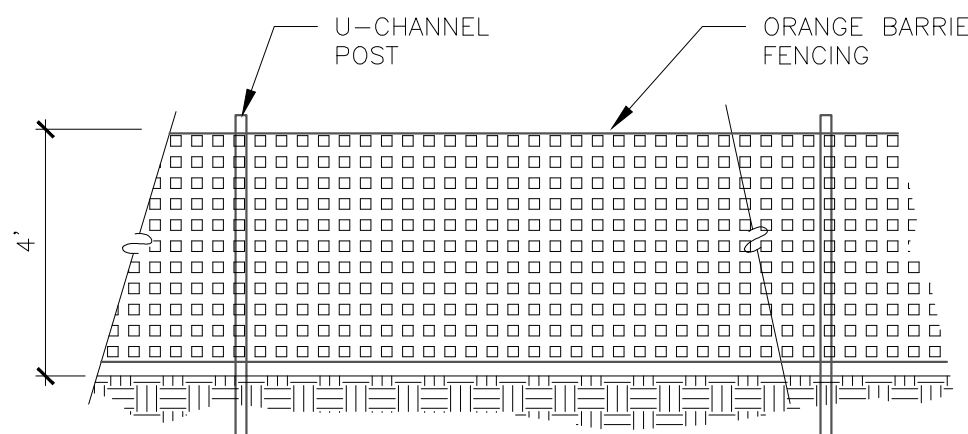
1 Temporary Silt Fence
NCDENR STD. 6.62



SIZE	1/4 BENDS				1/8 BENDS				1/16 BENDS				TEES				PLUGS			
	A	B	A	B	A	B	A	B	A	B	A	B	A	B	C	D	A	B	C	D
2 1/2"-4"	16"	10"	9"	10"	6"	8"	10"	12"	10"	12"	10"	12"	10"	12"	10"	21"				
8"	22"	13"	12"	13"	8"	10"	13"	16"	12"	16"	12"	16"	12"	16"	12"	29"				
10"	26"	17"	14"	17"	10"	13"	16"	20"	14"	16"	14"	16"	14"	16"	14"	36"				
12"	29"	21"	16"	21"	11"	16"	18"	24"	16"	24"	16"	24"	16"	24"	16"	41"				
14"	35"	24"	19"	24"	12"	20"	22"	27"	22"	27"	22"	27"	18"	48"						
16"	38"	27"	21"	27"	12"	24"	24"	30"	20"	24"	20"	24"	16"	54"						

NOTE:
BASED ON 100 PSI STATIC PRESSURE PLUS
AWWA WATER HAMMER ALL BEARING SURFACES
TO BE CARRIED TO UNDISTURBED GROUND

5 Concrete Thrust Block
N.T.S.



NOTES

1. CONTRACTOR TO INSTALL AND MAINTAIN ORANGE BARRIER FENCING AROUND EXISTING TREES WHERE DELINEATED ON PLAN.
2. NO PARKING OF EQUIPMENT OR MATERIALS SHALL BE PERMITTED INSIDE THIS AREA.
3. MAINTAIN BARRIER FENCING THROUGH CONSTRUCTION. REMOVE ALL BARRIERS UPON COMPLETION OF PROJECT.
4. REFER TO NCDENR STANDARDS FOR GENERAL SPECIFICATIONS REGARDING TREE PROTECTION.
5. 6" MINIMUM WIDTH FOR 2" CAL. TREES OR SMALLER.
6. ONE FOOT OF LINEAR DISTANCE FROM THE TREE TRUNK FOR EACH INCH OF TRUNK DIAMETER, OR 1/4 HEIGHT OF THE TREE WHICHEVER IS GREATER UNLESS OTHERWISE SHOWN ON PLAN.

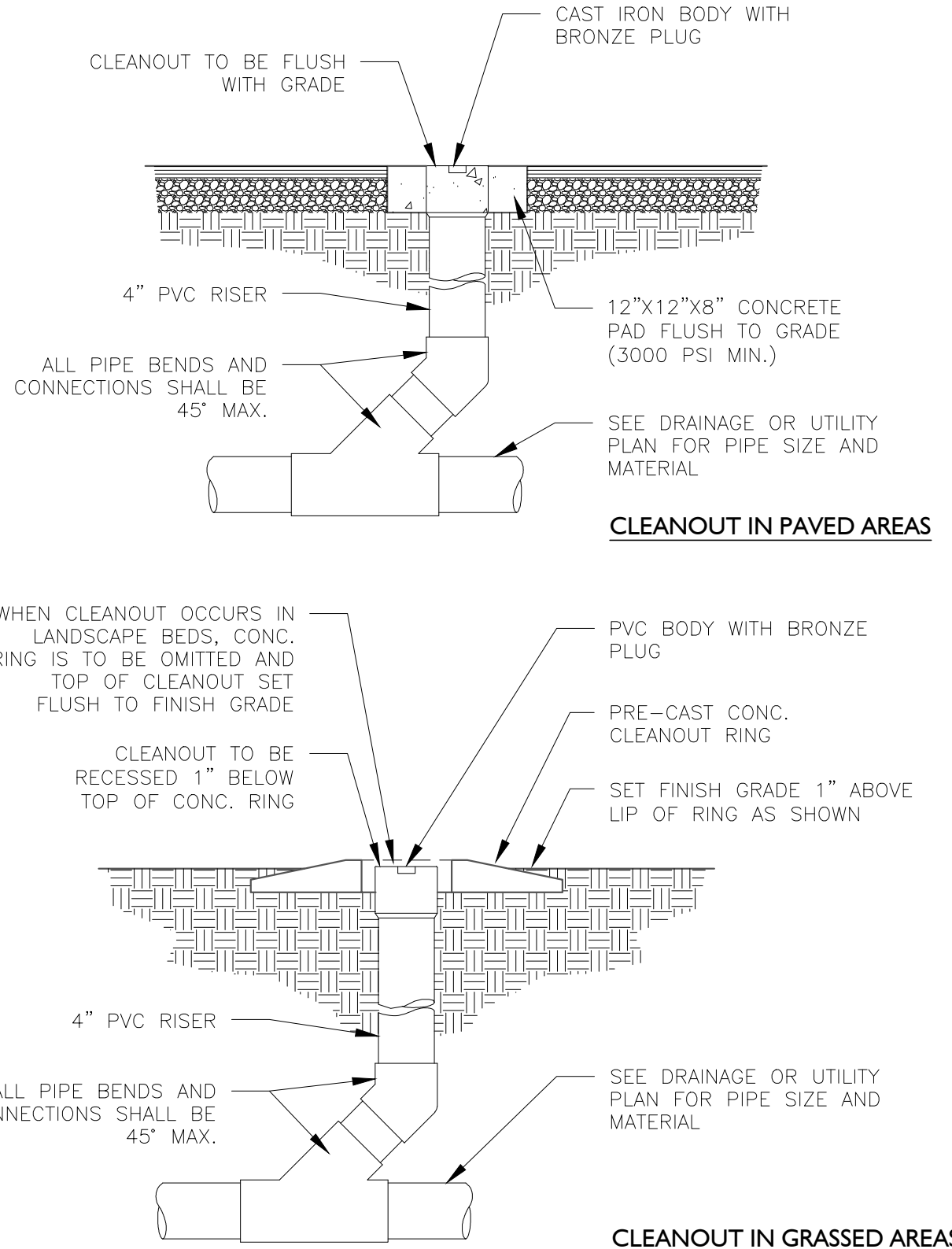
MATERIAL: FRP FIBERGLASS,

COLOR : STANDARD COLOR, PUDDLE

TEXTURES : SMOOTH

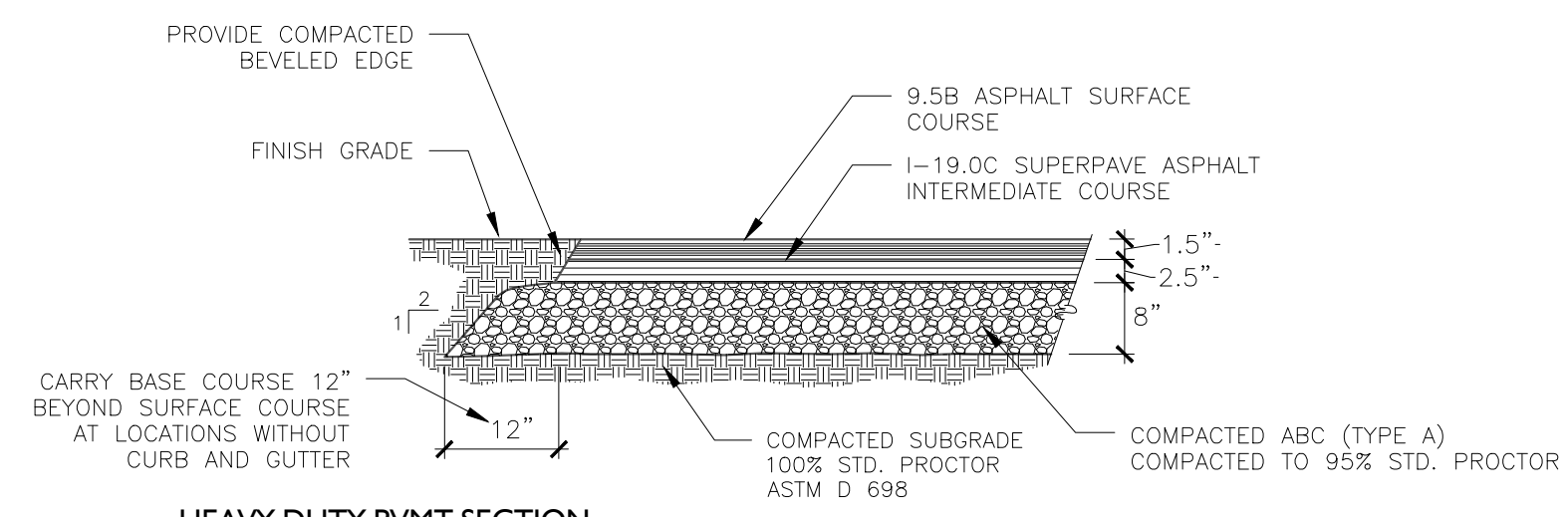
OPTIONS : DRAIN HOLES AND WITH CASTERS

2 Tree Protection Fence
N.T.S.



6 Cleanout
N.T.S.

NOTE: ENGRAVE "SS" IN SANITARY SEWER PLUG AND
ENGRAVE "SD" IN STORM DRAIN PLUG.

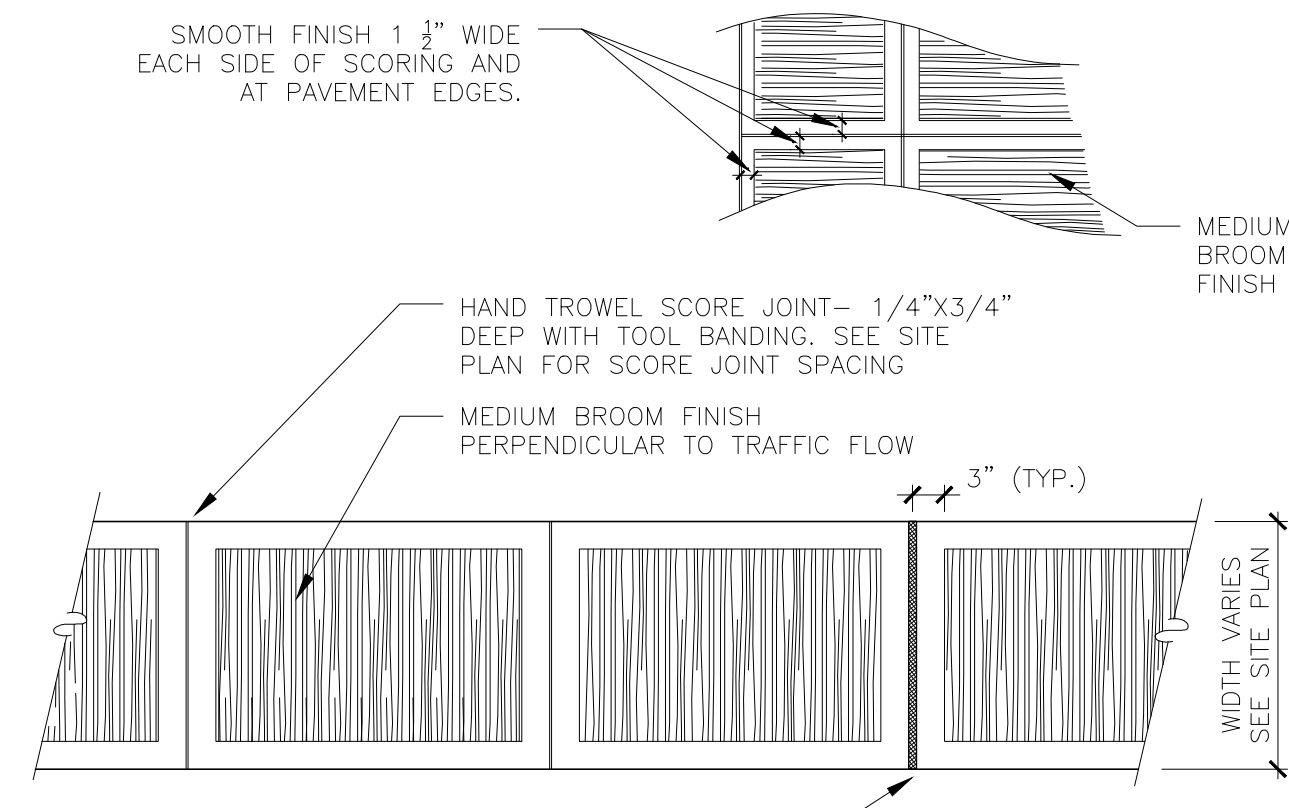


HEAVY DUTY PVMT SECTION

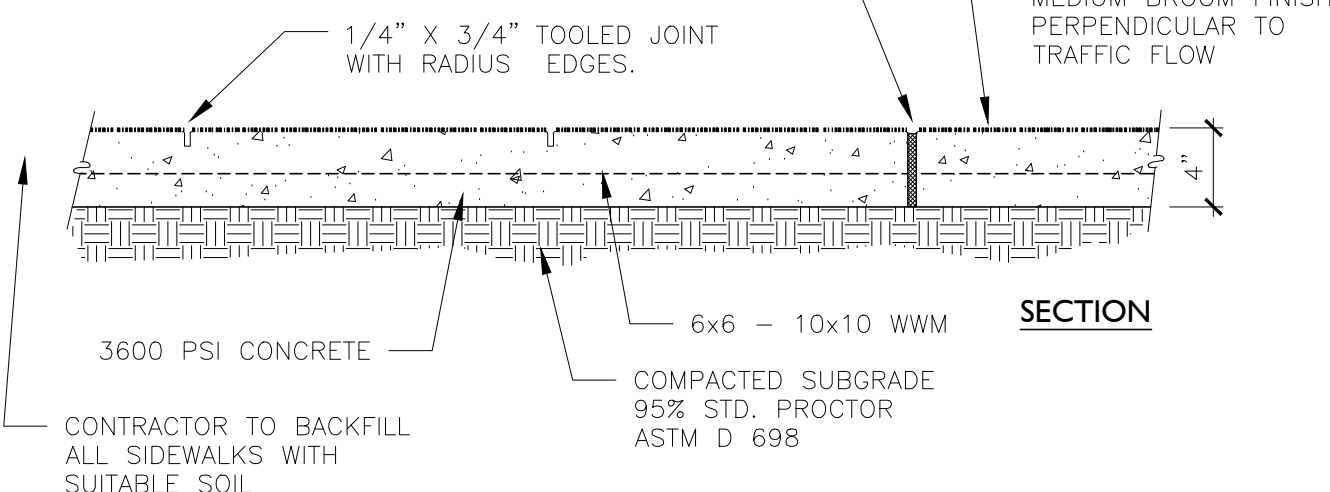
NOTES

1. SEE SPECIFICATIONS FOR OTHER REQUIREMENTS.
2. HEAVY DUTY PAVEMENT AREAS INDICATED TO RECEIVE A NEW SURFACE/BINDER COURSE ON THE EXISTING BASE COURSE (OVERLAY) SHALL USE 2 1/2" OF 1-19.0B INTERMEDIATE COURSE AND 1" OF 9.5B SURFACE COURSE.
3. ASPHALT MIX SHALL NOT CONTAIN MORE THAN 30% RECYCLED ASPHALT PRODUCT (RAP).

3 Asphalt Paving
N.T.S.



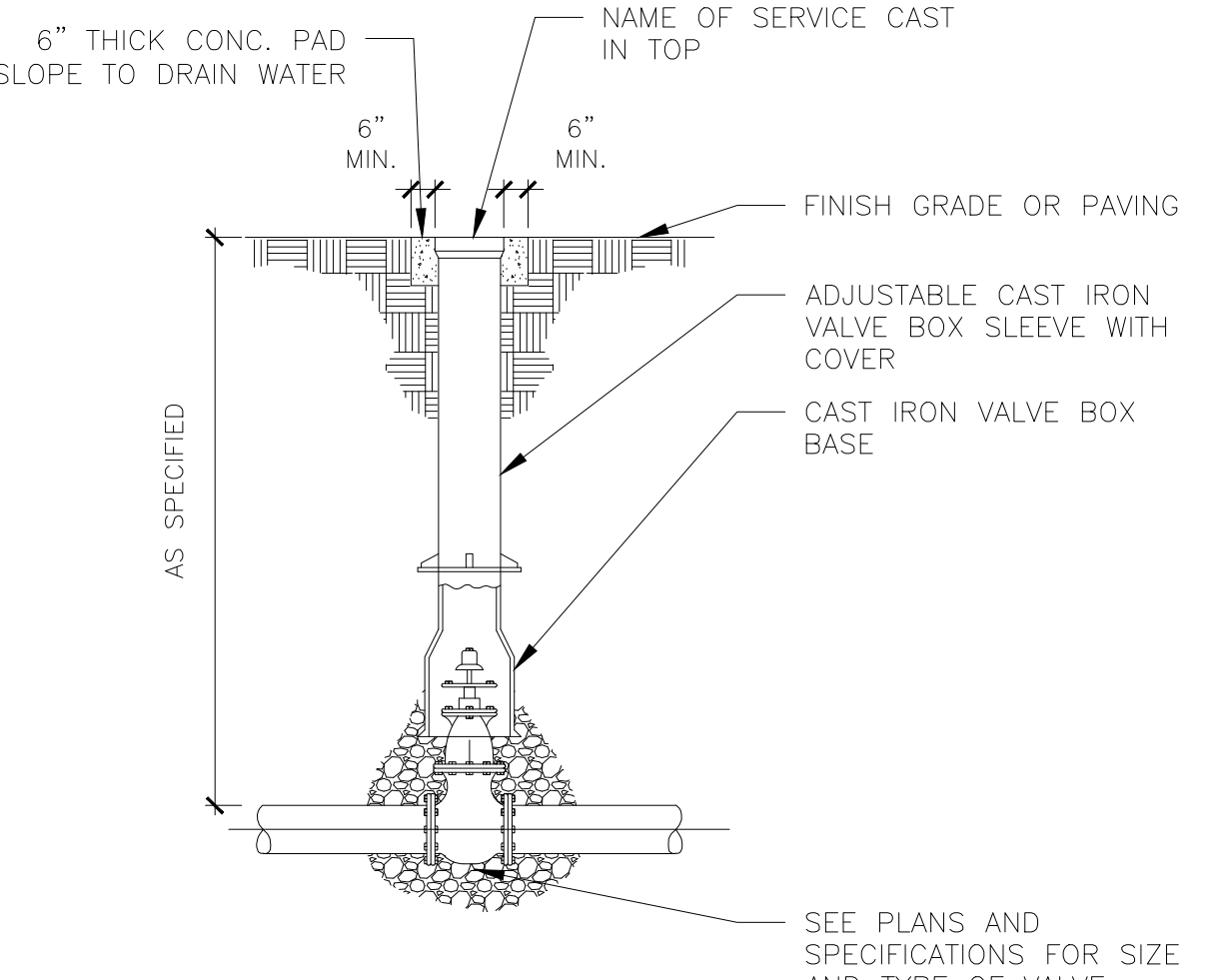
PROVIDE 1" BIT. EXPANSION JOINT @ 30' O.C.
WITH JOINT SEALER AS SPECIFIED-1/2" THICK;
1/4" BELOW FLUSH ON 1" THICK EXPANSION
JOINT. PLACE EXP. JOINT WHERE SHOWN ON
PLAN, WHERE NEW POUR IS CONTIGUOUS TO
ANY STRUCTURE, AND AT 30' O.C. MAX.



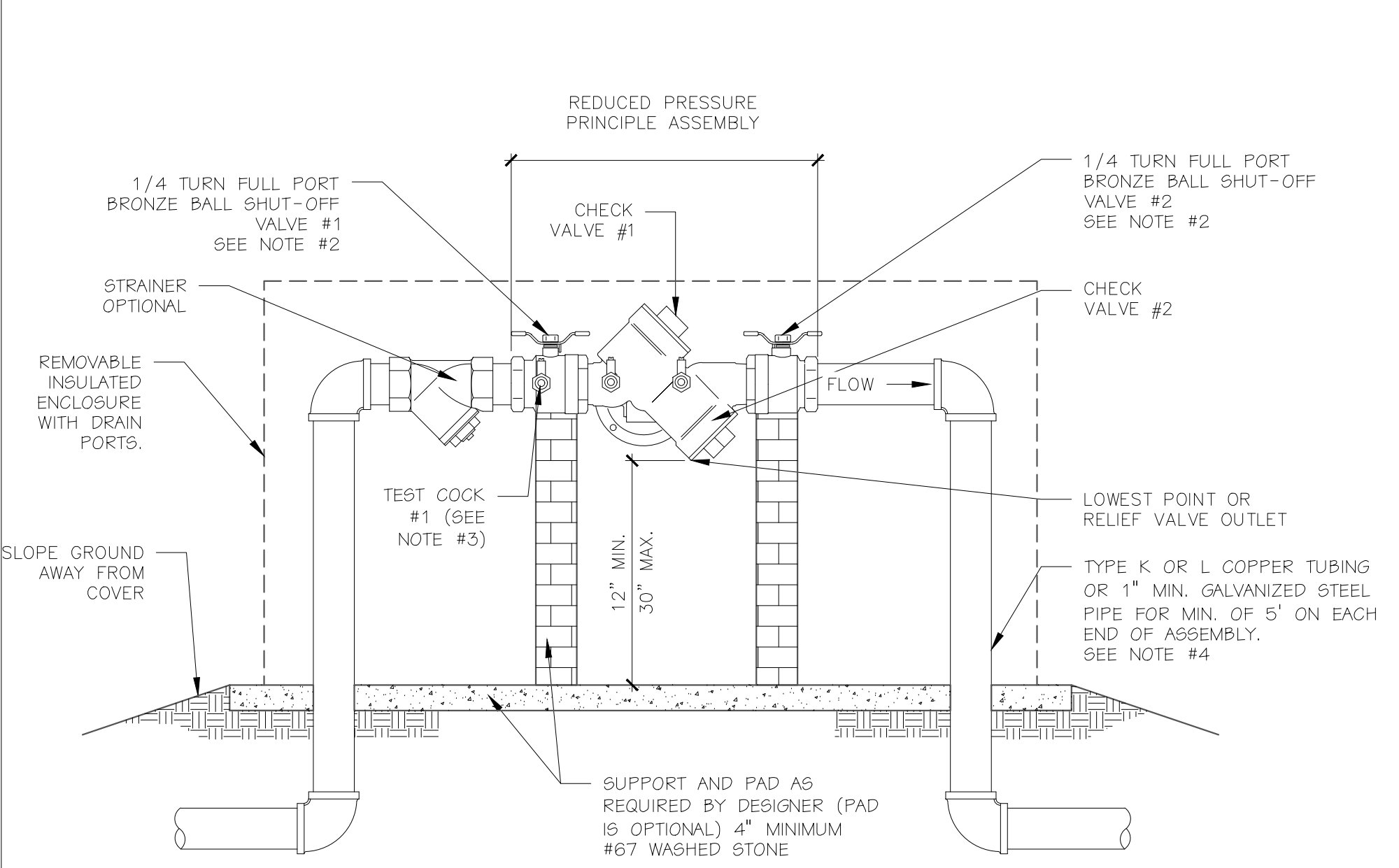
4 Concrete Sidewalk Detail
N.T.S.

NOTES:

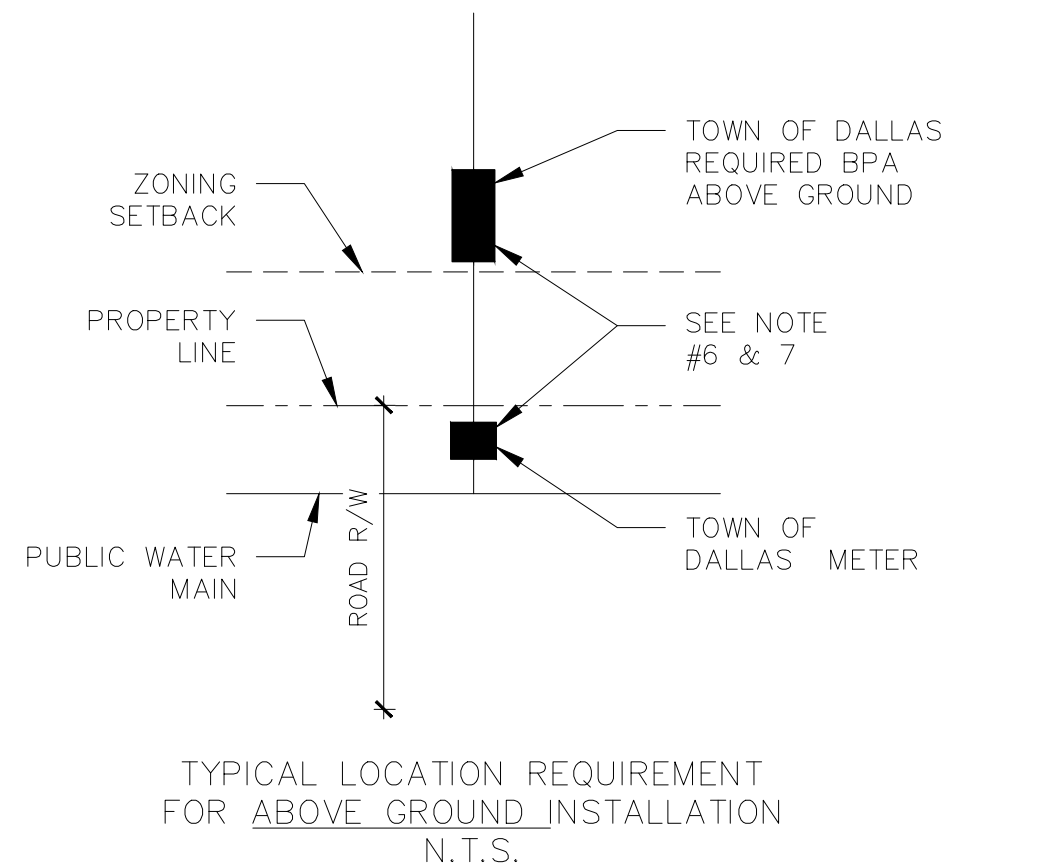
1. FIRE LINE VALVE COVERS TO BE LOCKABLE AND PAINTED RED (SUBMIT SHOP DRAWING).
2. DOMESTIC LINE VALVE COVERS TO BE LOCKABLE AND PAINTED BLUE (SUBMIT SHOP DRAWING).



7 Gate Valve
N.T.S.



8 3/4" - 2" Reduced Pressure Principle Assembly
N.T.S.



NOTES:

1. REDUCED PRESSURE PRINCIPLE ASSEMBLIES (RPA) MUST CONFORM TO TOWN OF DALLAS SPECIFICATIONS. REFER TO TOWN OF DALLAS APPROVED LIST OF BPA'S.
2. TOWN OF DALLAS APPROVED RPA INCLUDES SHUT-OFF VALVES #1 AND #2 AS PART OF THE ASSEMBLY. NO SUBSTITUTIONS SHALL BE PERMITTED.
3. TEST COCK #1 SHALL BE UPSTREAM OF SHUT-OFF VALVE #1 AND IS PART OF THE APPROVED ASSEMBLY.
4. PIPE MATERIAL AND FITTINGS SHALL BE AS SPECIFIED IN TOWN OF DALLAS STANDARDS & SPECIFICATIONS.
5. INSULATED ENCLOSURE SHALL BE AS SPECIFIED IN TOWN OF DALLAS ENCLOSURE INFORMATION.
6. ALL LOCATIONS FOR BPA'S REQUIRE TOWN OF DALLAS APPROVAL.
7. THERE SHALL BE NO TAPS, PIPING BRANCHES, UNAPPROVED BYPASS PIPING, HYDRANTS, FIRE DEPT. CONNECTION POINTS, OR OTHER WATER-USING APPURTENANCES CONNECTED TO THE SUPPLY LINE BETWEEN ANY WATER METER AND ITS TOWN OF DALLAS-REQUIRED BACKFLOW PREVENTER.
8. EACH TOWN OF DALLAS-REQUIRED BPA IS REQUIRED TO BE TESTED BY A TOWN OF DALLAS-APPROVED CERTIFIED TESTER PRIOR TO PLACING THE WATER SYSTEM IN SERVICE.

Seals:

PRELIMINARY
NOT FOR
CONSTRUCTION

Corp. NC License: F-1320



Restroom at Lake Park
400 Lake Park Blvd S,
Carolina Beach, NC 28428

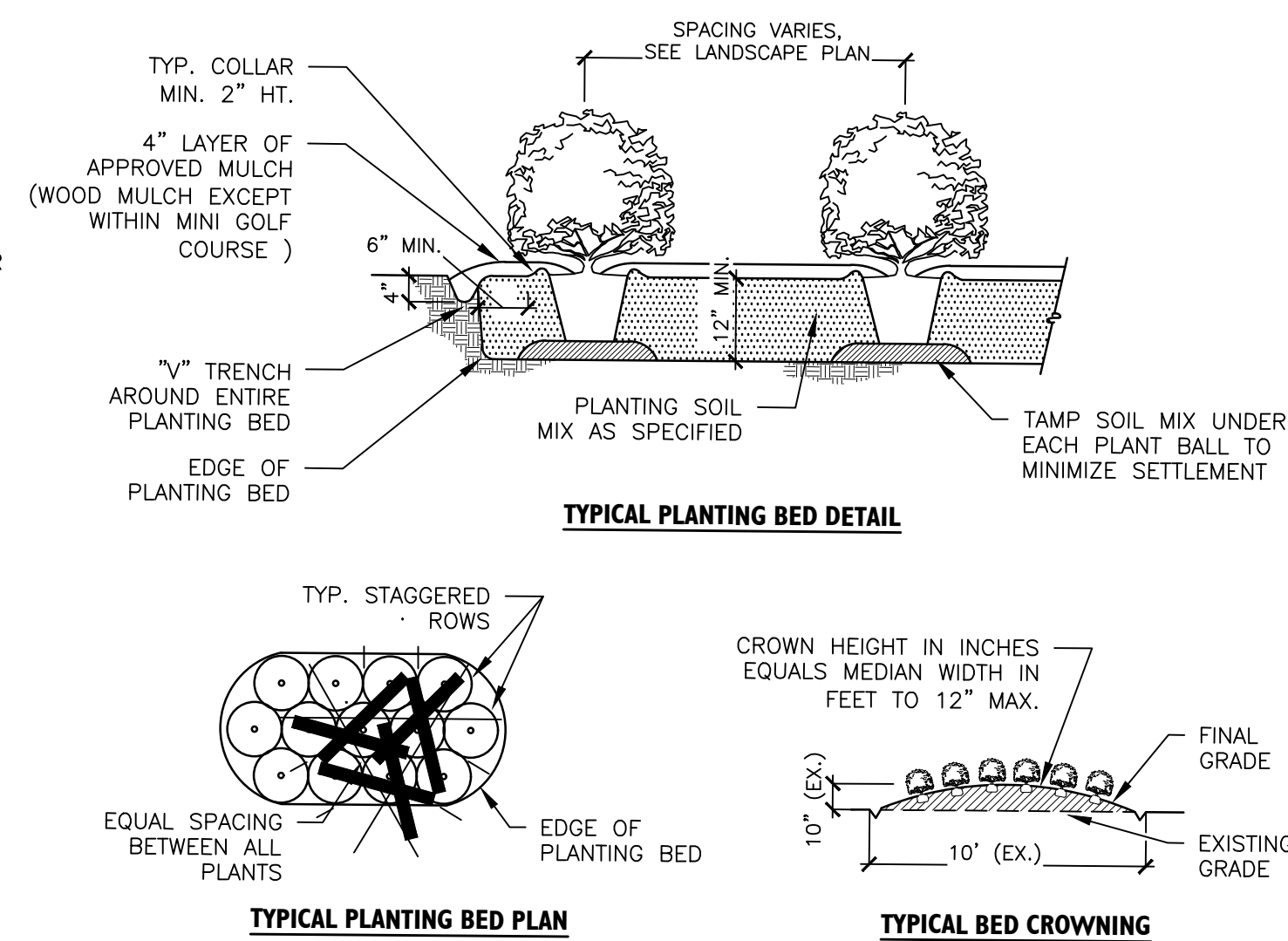
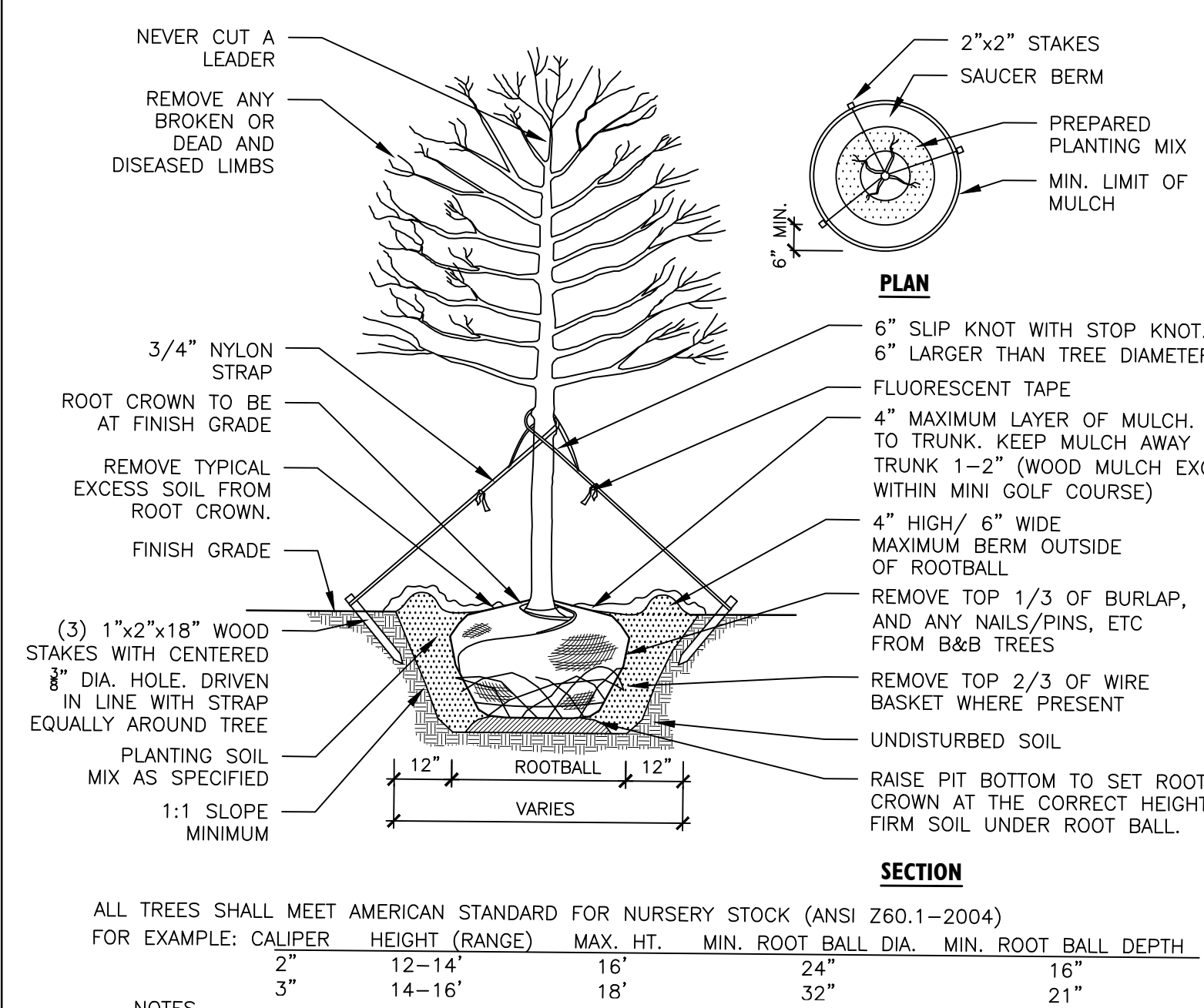
Project No: 1725-500526.01
Date: 02.19.25
Revisions:
.











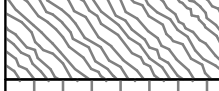

Sheet Title:

**SITE
CONSTRUCTION
DETAILS**

Sheet No:

C500



PLANT SCHEDULE						
CANOPY TREES	CODE	QTY	BOTANICAL / COMMON NAME	ROOT	CAL.	
	QM	3	Quercus virginiana 'Millenium' / Southern Live Oak	8 & 8	2"Cal	
	ZS	1	Zelkova serrata / Japanese Zelkova	8 & 8	2"Cal	
FLOWERING TREES	CODE	QTY	BOTANICAL / COMMON NAME	ROOT	CAL.	
	LI	2	Lagerstroemia indica x fauriei 'Natchez' / Natchez Crape Myrtle	8 & 8	1.5"Cal	
SHRUBS	CODE	QTY	BOTANICAL / COMMON NAME	CONT	REMARKS	
	CA	13	Clethra alternifolia / Sweet Pepperbush	5 gal		
	LN	12	Laurus nobilis / Sweet Bay	5 gal		
	SP	22	Sabal palmetto / Cabbage Palmetto	7 gal		
	VS	7	Vaccinium x 'Sunshine Blue' / Sunshine Blue Highbush Blueberry	5 gal		
	VD	18	Viburnum davidii 'Angustifolium' / David Viburnum]	5 gal		
GROUND COVERS	CODE	QTY	BOTANICAL / COMMON NAME	CONT	REMARKS	SPACING
	CL	234	Coreopsis lanceolata / Lanceleaf Tickseed	1 gal		12" o.c.
	CT	2,307 sf	Cynodon x 'Tifton 328' / Tifgreen Bermudagrass	sod		
	KP	85	Kosteletzkya pentacarpos / Saltmarsh Mallow	2 gal		18" o.c.
	SS	19	Schizachyrium scoparium 'The Blues' / The Blues Little Bluestem	3 gal		36" o.c.

Seals:

PRELIMINARY
NOT FOR
CONSTRUCTION

Corp. NC License: F-1320



Restroom at Lake Park

Project No: 1725-500526.0

Date: 02.19.2

Revisions:

Sheet Title:

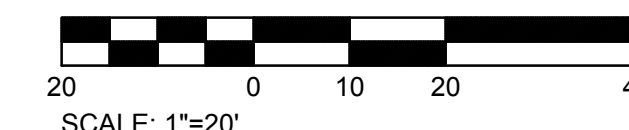
LANDSCAPE PLAN

Sheet No:

C600



Know what's **below**.
Call before you dig



				DOOR SCHEDULE			
A	TYPE	FRAME	DOOR SIZE	MATERIAL	DOOR TYPE	LATCH	LOCK
	SINGLE	3/0 x 6/8 x 3-3/4"	3/0 x 6/8 x 1-3/4"	GALVANIZED	LH REVERSE	PASSAGE	DEADBOLT
	GLAZING	HINGES	KICK PLATE	STOP	SWEEP	THRESHOLD	VENTILATION
	N/A	SPRING HINGE 4-1/2" x 4 1/2"	N/A	FLOOR	3'	3' x 4" x 1/4"	LOUVER
B	TYPE	FRAME	DOOR SIZE	MATERIAL	DOOR TYPE	LATCH	LOCK
	SINGLE	3/0 x 6/8 x 3-3/4"	3/0 x 6/8 x 1-3/4"	GALVANIZED	RH REVERSE	PASSAGE	DEADBOLT
	GLAZING	HINGES	KICK PLATE	STOP	SWEEP	THRESHOLD	VENTILATION
	N/A	SPRING HINGE 4-1/2" x 4 1/2"	N/A	FLOOR	3'	3' x 4" x 1/4"	LOUVER
C	TYPE	FRAME	DOOR SIZE	MATERIAL	DOOR TYPE	LATCH	LOCK
	SINGLE	6/0 x 6/8 x 3-3/4"	(2) 3/0 x 6/8 x 1-3/4"	GALVANIZED	RH (ACTIVE) / LH (INACTIVE)	PASSAGE	DEADBOLT
	GLAZING	HINGES	KICK PLATE	STOP	SWEEP	THRESHOLD	VENTILATION
	N/A	SPRING HINGE 4-1/2" x 4 1/2"	N/A	WALL	6'	3' x 4" x 1/4"	N/A

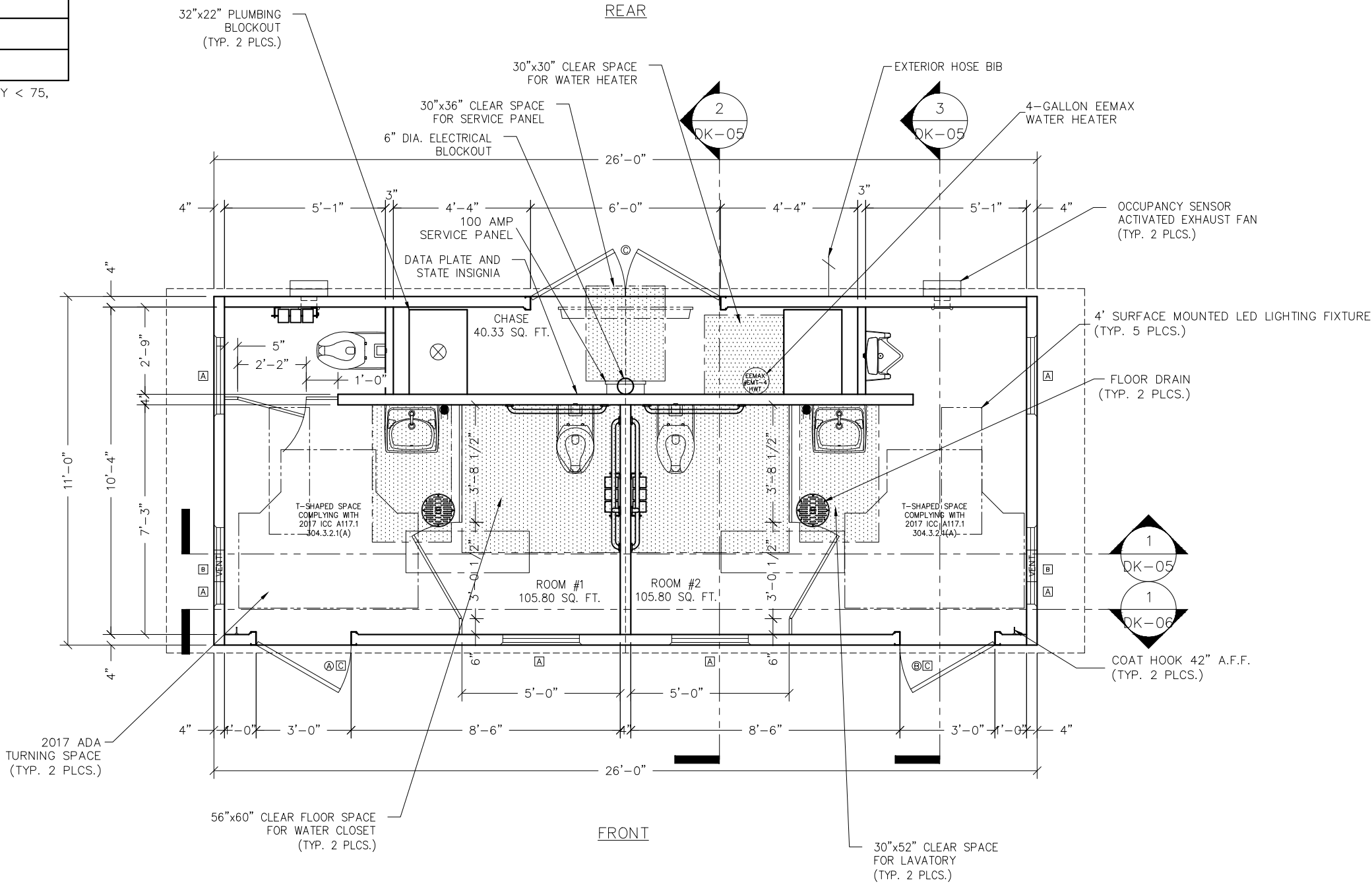
WINDOW & VENT SCHEDULE

SYMBOL	DESCRIPTION
A	MS-4 EMBED
B	MS-2 EMBED
C	DOOR LOUVER

LEXAN SELF-IGNITION > 1000, SMOKE DENSITY < 75, CLASS CC1.

- ALL EXTERIOR DOORS AND WINDOWS TO BE LISTED AND LABELED AS COMPLIANT WITH AAMA/WDMA/CSA101/I.S.2/A440 OR TESTED PER ASTM E330.
- DOOR HARDWARE SHALL NOT REQUIRE TIGHT PINCHING OR TWISTING OF THE WRIST OR SPECIAL KNOWLEDGE TO OPERATE.
- UNLATCHING OF ANY DOOR SHALL NOT REQUIRE MORE THAN ONE OPERATION,

LIGHTING AND VENTILATION REQUIREMENTS		
AREA	RESTROOM	CHASE
REQUIRED VENTILATION	105.80 SQ FT	40.33 SQ FT
PROVIDED VENTILATION	4.23 SQ FT	1.61 SQ FT
REQUIRED NATURAL LIGHTING	20.87 SQ FT	40.00 SQ FT
PROVIDED NATURAL LIGHTING	8.46 SQ FT	3.23 SQ FT
***ARTIFICIAL LIGHTING PROVIDED TO MEET REQUIRED FOOT CANDLES.	3.00 SQ FT ***	0.00 SQ FT ***



NOTE: ELECTRICAL AND PLUMBING COMPONENTS ARE SHOWN FOR GENERAL ARRANGEMENT ONLY. SEE SHEETS DK-20 THRU DK-24 FOR COMPLETE SYSTEM DESCRIPTIONS.

LB Foster
CXT® Products

6707 E. Flamingo Ave. Bldg 300, Nampa, ID 83687
901 N. Highway 77 Hillsboro, TX 76645
362 Waverly Road Williamstown, WV 26187

PROJECT TITLE
DAKOTA
BUILDING NUMBER 25-014P

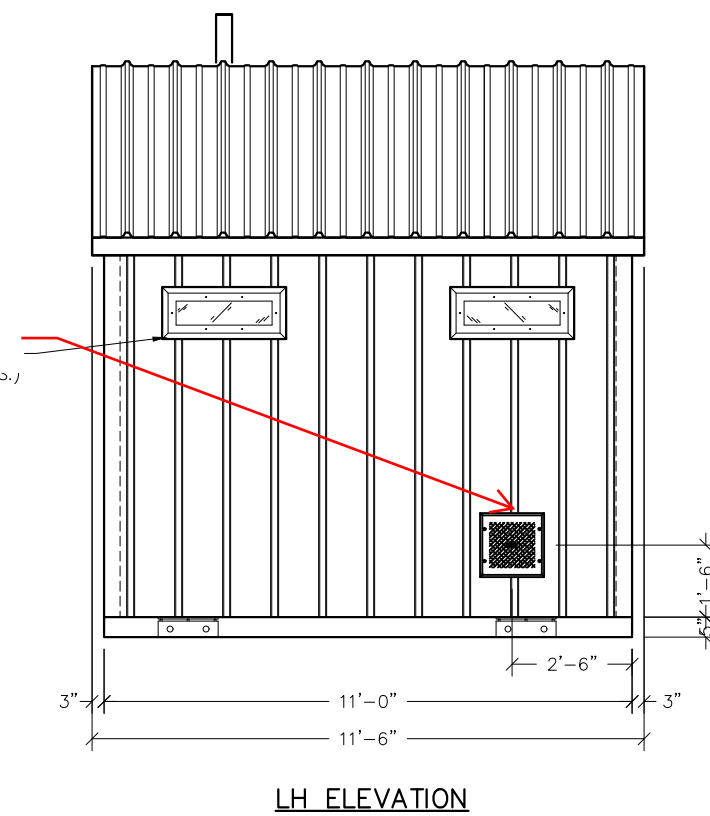
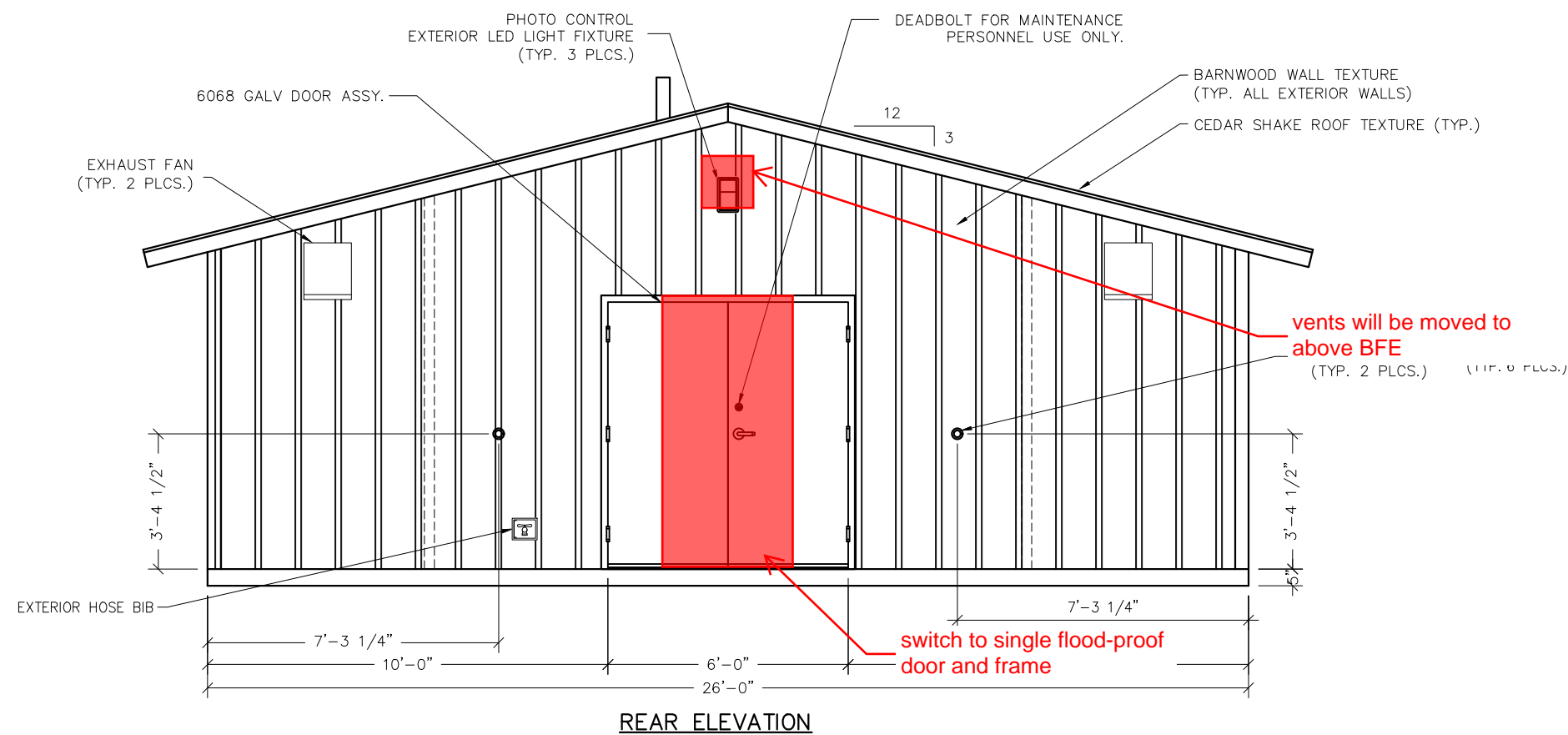
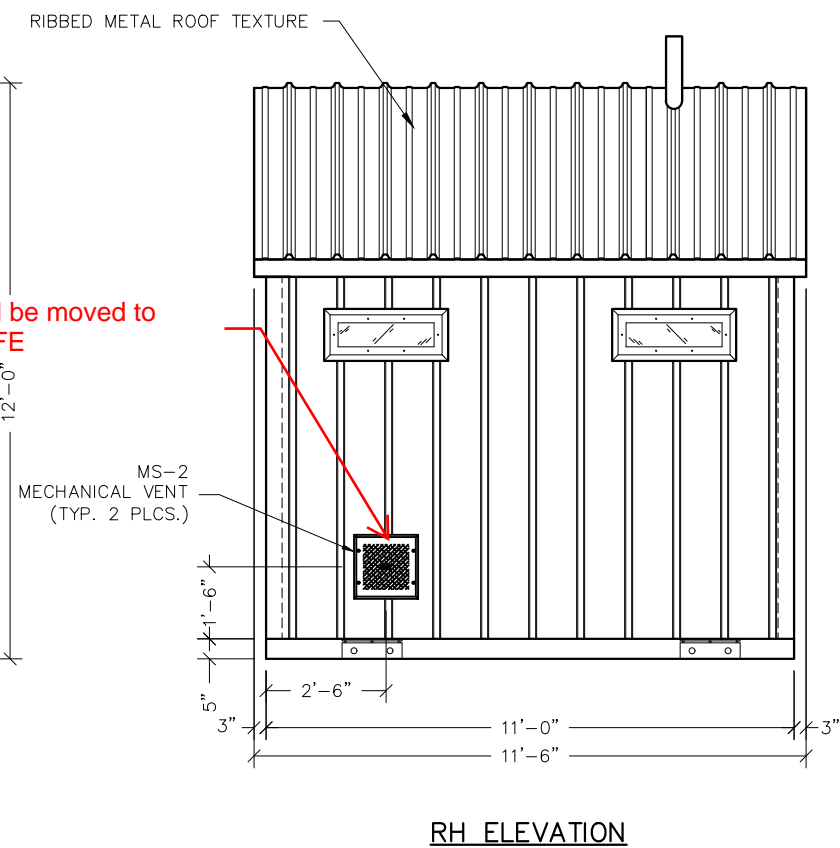
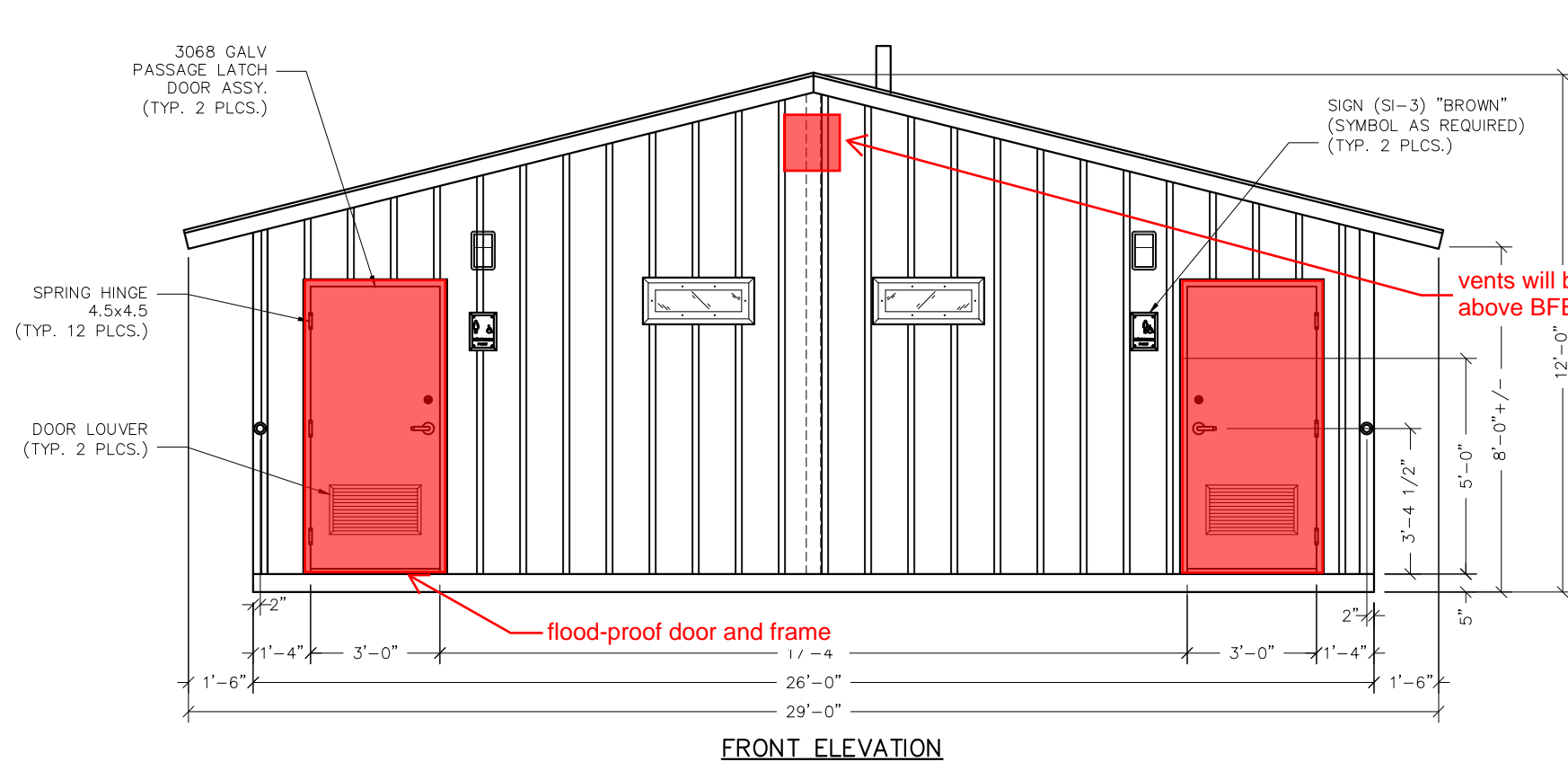
NOTICE
The information contained herein is proprietary and the exclusive property of CXT Incorporated. The information may only be used by the original recipient for the purpose intended. Reproduction or distribution of this information is strictly prohibited without the prior written consent of CXT Incorporated. By allowing use of this information, CXT Incorporated grants no warranty, express or implied, including a warranty of merchantability or of fitness for a particular purpose.

CXT Incorporated			

REV.	DESCRIPTION	APPROVAL	DATE
SCALE	1/4"=1'-0"	DATE	2/20/25
DRAWN	M. TOLMAN	FILE NO.	DK-122
CHECKED	N.PENNER	PLOT	48

FLOOR PLAN

DWG NO.	SHEET	REV.
DK-03	3 25	0



MATERIALS	
ITEM	QTY
MS-2	2
3068 MORTISE LATCH DOOR ASSY	2
6068 GALV DOOR ASSY	1
SPRING HINGE 4.5x4.5	12
MS-4 WINDOW	6
HOSE BIB	1
WALL DOOR STOP	4
SI-3 "BROWN"	2
DOOR LOUVER	2

CU. FT. CONC.	SQ. FT. W.W.F.
---------------	----------------

APPROXIMATE WEIGHT

LB Foster®
CXT® Products

6707 E. Flamingo Ave. Bldg 300, Nampa, ID 83687
901 N. Highway 77 Hillsboro, TX 76645
362 Waverly Road Williamstown, WV 26187

PROJECT TITLE
DAKOTA
BUILDING NUMBER 25-014P

NOTICE

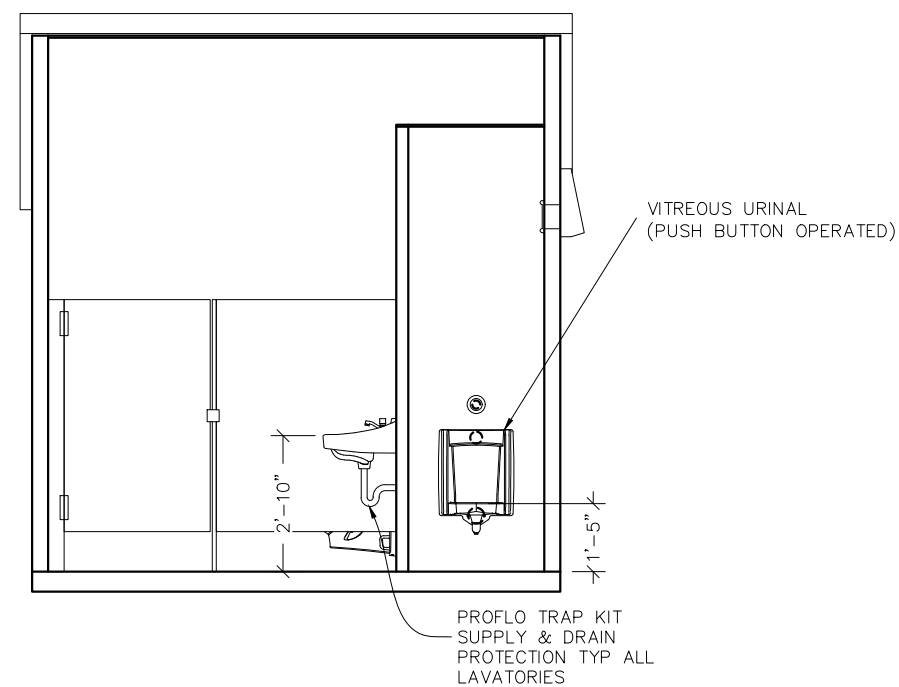
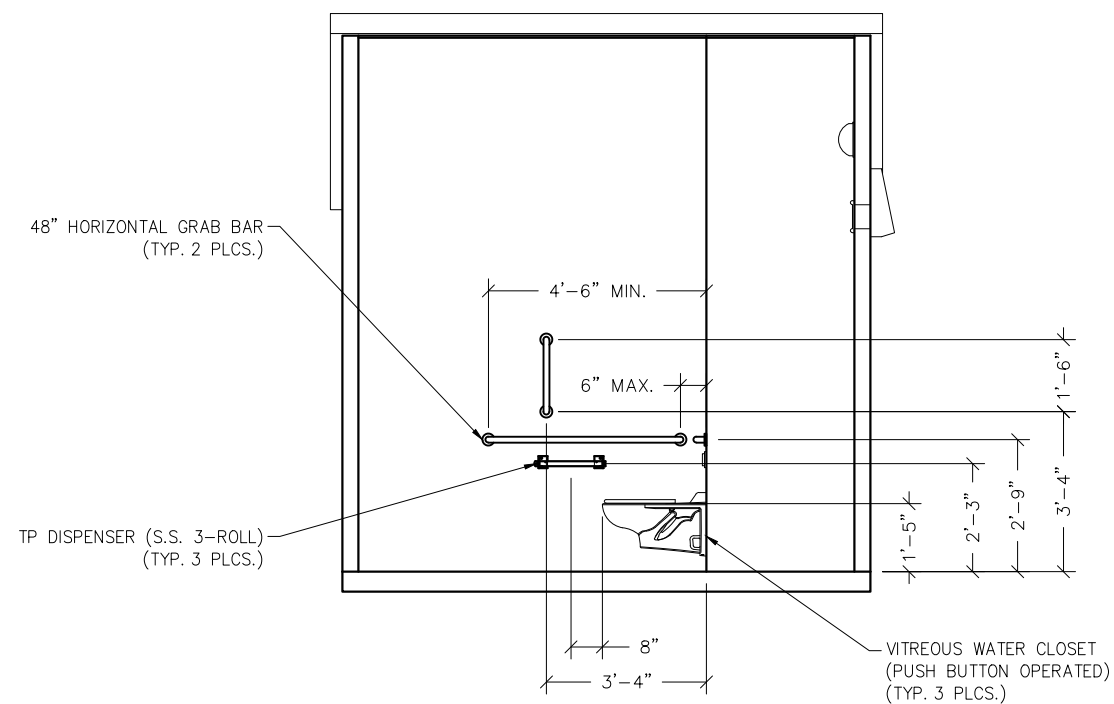
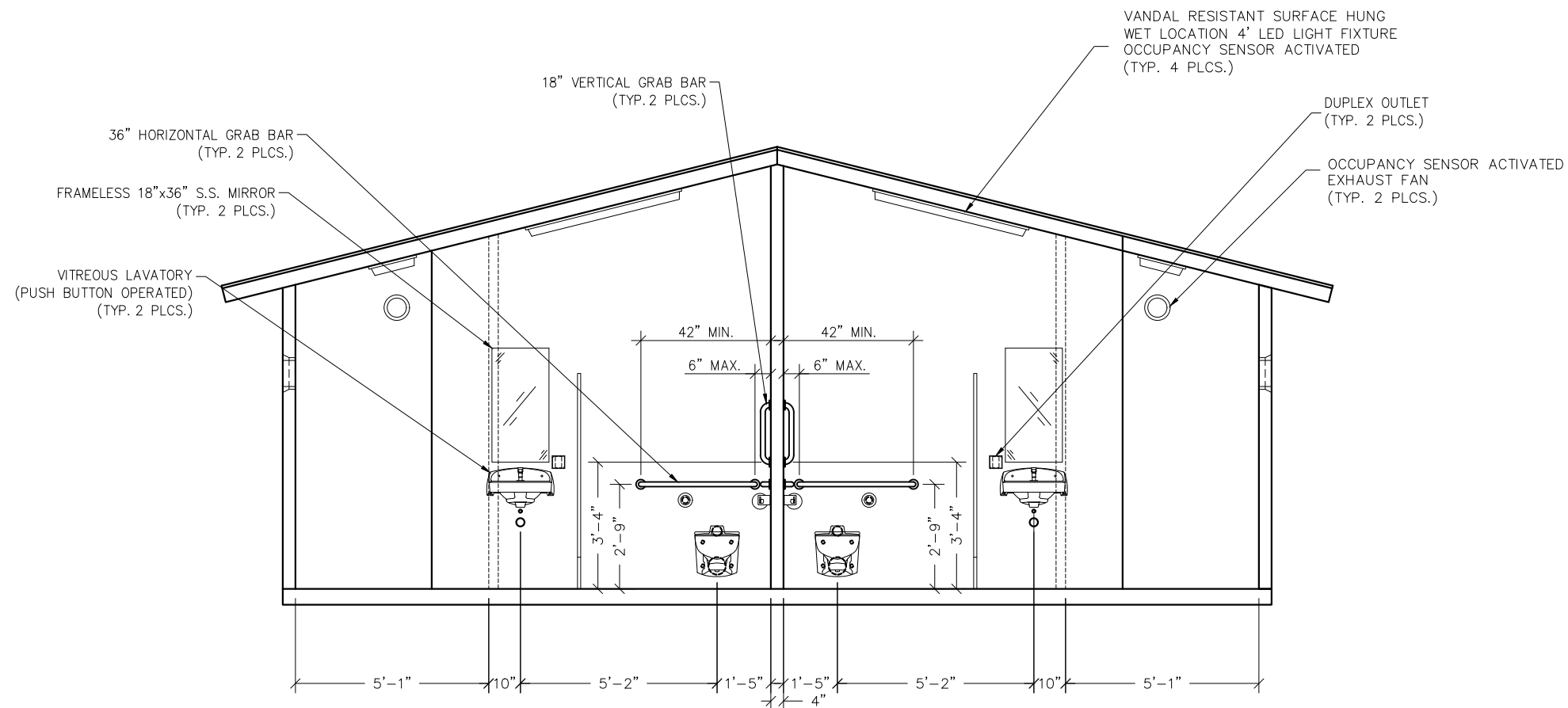
The information contained herein is proprietary and the exclusive property of CXT Incorporated. The information may only be used by the original recipient for the purpose intended. Reproduction or distribution of this information is strictly prohibited without the prior written consent of CXT Incorporated. By allowing use of this information, CXT Incorporated grants no warranty, express or implied, including a warranty of merchantability or of fitness for a particular purpose.

CXT Incorporated

REV.	DESCRIPTION	APPROVAL	DATE
SCALE	1/4"=1'-0"	DATE	2/20/25
DRAWN	M. TOLMAN	FILE NO.	DK-122
CHECKED	N.PENNER	PLOT	48

BUILDING
ELEVATIONS

DWG NO. DK-04	SHEET 4 25	REV. 0
----------------------	------------------	---------------

[illegible]

CU. FT. CONC.	SQ. FT. W.W.F.
---------------	----------------

APPROXIMATE WEIGHT



6707 E. Flamingo Ave. Bldg 300, Nampa, ID 83687
901 N. Highway 77 Hillsboro, TX 76645
362 Waverly Road Williamstown, WV 26187

PROJECT TITLE
DAKOTA
BUILDING NUMBER 25-014P

NOTICE

The information contained herein is proprietary and the exclusive property of CXT Incorporated. The information may only be used by the original recipient for the purpose intended. Reproduction or distribution of this information is strictly prohibited without the prior written consent of CXT Incorporated. By allowing use of this information, CXT Incorporated grants no warranty, express or implied, including a warranty of merchantability or of fitness for a particular purpose.

CXT Incorporated			
REV.	DESCRIPTION	APPROVAL	DATE
SCALE	1/4"=1'-0"	DATE	2/20/25
DRAWN	M. TOLMAN	FILE NO.	DK-122
CHECKED	N. PENNER	PLOT	48

INTERIOR ELEVATIONS

DWG NO. DK-05	SHEET 5 25	REV. 0
----------------------	------------------	---------------

